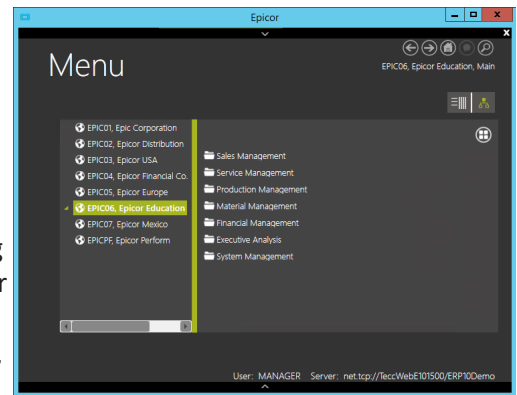


TeccWeb Company Insert & Delete

Have you ever wanted to add or remove a Company from your E10 Multi Company Environment?

Maybe you sold off a division, wrapped up a testing scenario, or simply started out wrong and changed your mind. Now you have a hanging company instance in the Epicor system with no way to remove it. Perhaps you've sold off the company and have a legal obligation to remove the data from your system. Maybe you've purchased a new company and want to add them to your existing system. Maybe you've got a number of companies all using Epicor and want to bring them together into one instance of E10 to leverage the full potential of the software with Global Customers, Global Parts and Intercompany processing.



TeccWeb has been thinking long and hard about these problems and we are thrilled to introduce the **TeccWeb Company Insert & Delete Service** (soon to be a stand alone Runtime)

TeccWeb Company Insert & Delete is the fastest, most reliable way to add and remove entire company instances in your Live E10 environment.

- No matter how large the database, we can handle the insertion or deletion
- No hanging records will be left upon deletion, all remnants of the Company are deleted
- All Company information is inserted into the system, all tables, transactional data, parts, UD info, etc.
- Eliminate the need for re-implementation when combining companies
- Preserves all company specific customizations with insertion
- Non company specific customizations remain untouched through both insertion and deletion
- Streamline new implementations by extracting the Test System company to insert it into Live

TeccWeb is the only Certified Epicor Partner that has this solution. Our expert technical staff have extensive knowledge and unique skills that you simply can't find elsewhere. **We pick up where Epicor Professional Services left off.**

What the service includes:

1. Back-up of the Database and the Log Files
2. Review your Company Setups
3. Instructions to prepare your system for the process
4. Perform the Company Insert or Delete

Time required is dependent on the size of the DB and will be evaluated during the review process step.



TeccWeb Company Insert & Delete is ready as a service and will soon be released as a stand alone product. Anyone who purchases **TeccWeb Company Insert & Delete** as a service will automatically get the first release of the stand alone product. For more information please speak to your consultant or contact our team at sales@teccweb.com.

Ask about Teccweb Server ProActive, AntiVirus and Off-Site backups.

22 King Street South, Suite 300, Waterloo, Ontario N2J 1N8
info@teccweb.com | www.teccweb.com
905-637-9255

EPICOR
Services Partner

